

BOS LAURIER REGATA

ESPH1501989032

ES061103565152

29/11/2001



Comestar LAURIER

Bos Mandel RIGUEIRA
(2) EX

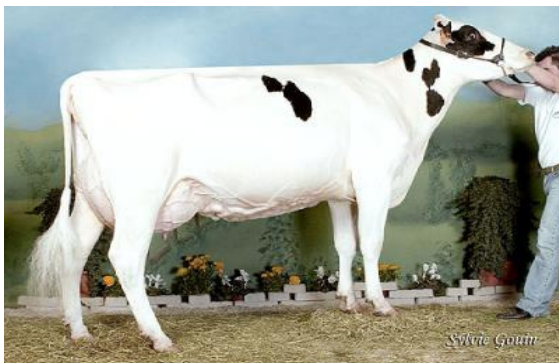
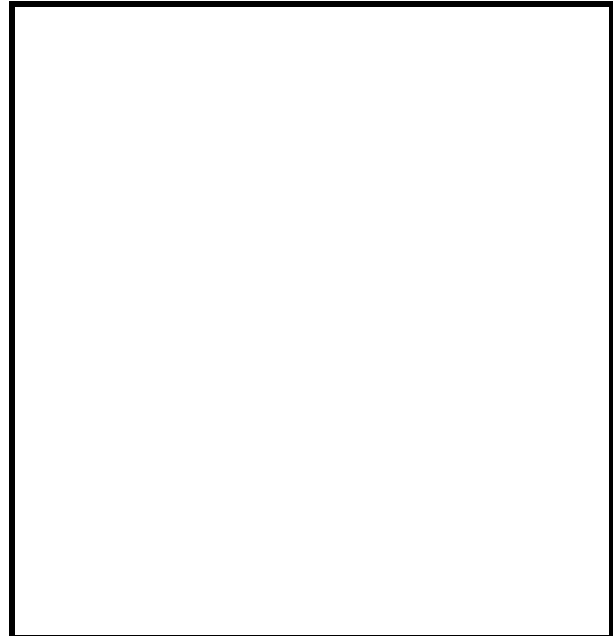
Lutz- Meadow E MANDEL

Tidy-Brook B-Star SALLY
MB 85

To- Mark BLACKSTAR

Tidy- Brook SALLY Ned Boy
MB 85

Hija de Bos Mandel RIGUEIRA, una de las vacas más sobresalientes de UTE BOS.
Patrón de vacas muy consistentes
TIPO- ESTRUCTURA- FORTALEZA Y UBRES ESCEPCIONALES.



Bos Laurier REGATA



Bos Mandel RIGUEIRA



Genetic Evaluation Summary

HOESPF1501989032 BOS LAURIER REGATA**%INB %R**

Born 29-NOV-01

4.95% 11%

Sire: [HOCANM6334336](#) COMESTAR LAURIER 02-APR-95 1.18% 11%
 Dam: [HOESPF9201054594](#) 15-AUG-95 2.87% 11%
 MGS: [HOUSAM2119526](#) LUTZ-MEADOWS E MANDEL-ET 29-OCT-89 4.07% 10%

PRODUCTION**GMACE 11*AUG****LIFETIME PROFIT INDEX****Rel**

		Kg	%RK	%Dev	GPA LPI	-524	61
Lactations	0				PRODUCTION	-300	
Test Day Records	Milk	-236	26%		DURABILITY	-242	
Daughters/Sons	Fat	-20	11%	-0.12	HEALTH & FERTILITY	18	
Reliability	63% Protein	5	45%	+0.13			

CONFORMATION**GPA 11*AUG**

Reliability: 60%

SCORECARD	Index	%RK	-15	-10	-5	0	5	10	15
Conformation	-3	5%							
Mammary System	-1	17%							
Feet & Legs	-4	2%							
Dairy Strength	-2	18%							
Rump	-1	22%							

DESCRIPTIVE

Udder Depth	1D	Deep								Shallow
Udder Texture	-3	Fleshy								Soft
Median Suspensory	-4	Weak								Strong
Fore Attachment	0	Weak								Strong
Front Teat Placement	2C	Wide								Close
Rear Attachment Height	-2	Low								High
Rear Attachment Width	-4	Narrow								Wide
Rear Teat Placement	4W	Wide								Close
Teat Length	2S	Short								Long
Foot Angle	0	Low								Steep
Heel Depth	2	Shallow								Deep
Bone Quality	-1	Coarse								Flat
Rear Legs Side View	3C	Straight								Curved
Set of Rear Legs	-2	Undesirable								Desirable
Rear Legs Rear View	-5	Hocked-in								Straight
Stature	-1	Short								Tall
Height at Front End	0	Low								High
Chest Width	-1	Narrow								Wide
Body Depth	1	Shallow								Deep
Angularity	-1	Non-Angular								Angular
Loin Strength	-3	Weak								Strong
Rump Angle	2H	High								Low
Pin Setting	0	Undesirable								Desirable
Pin Width	0	Narrow								Wide

FUNCTIONAL

	Rating	Rel		Difference from Breed Average (SD)					Breed Avg.	
Herd Life	97GPA	58%	Short						Long	100
Somatic Cell Score	3.01GM	62%	Undesirable						Desirable	3.00
Lactation Persistency	100GPA	55%	Poor						High	100
Daughter Fertility	101GPA	54%	Poor						High	100
Milking Speed	96GPA	52%	Slow						Fast	100
Milking Temperament	102GPA	51%	Nervous						Calm	100
Calving Ability	88GPA	60%	Difficult						Easy	100
Daughter Calving Ability	95GPA	52%	Difficult						Easy	100