

**BOS GOLDWYN JESSY- MB 85**

ESPH1503006598

ES061107343094

12/12/2007



**Braedale GOLDWYN**

**Bos Allen JENY  
MB 89**

**Canyon- Breeze ALLEN**

**Gillette- Durham JERICO  
EX 90**

**Madre de JORDAN- JERRICK  
JUNGLE**

**Regancrest Elton DURHAM**

**Windemere - JELLYBEAN  
EX 90**

6 Generaciones de vacas MB/EX  
DE la familia de Durham JERICO  
Una de las familias más exitosas de Canadá.  
Los Hijos/as de JERICO, ocupan los primeros  
puestos del TPI.  
GTPI, para tipo de +3,06

**4 MADRE**

**Maspring Darryl JANET  
EX 90**

**5 MADRE**

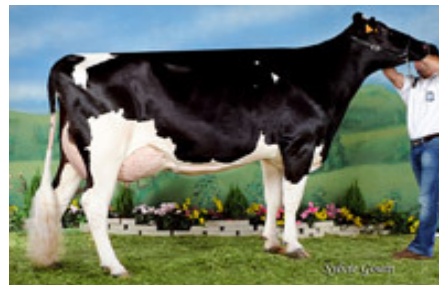
**Maspring Rotate MARIE  
MB 88**

**6 MADRE**

**Maspring Tony JANICE  
EX 91**



**Bos Goldwyn Jessy**



**Bos Allen Jeny**



# Genetic Evaluation Summary

**HOESPF1503006598 BOS GOLDWYN JESSY**

Born 12-DEC-07

**%INB** 5.66%  
**%R** 16%

Sire: <a href="#">HOCANM10705608</a>	BRAEDALE GOLDWYN	03-JAN-00	15.69%	18%
Dam: <a href="#">HOESPF1502532111</a>	BOS ALLEN JENY ET	03-SEP-05	6.70%	14%
MGS: <a href="#">HOUSAM17129288</a>	CANYON-BREEZE ALLEN-ET	02-DEC-95	11.09%	15%

## PRODUCTION

**GMACE 12\* AUG**

Lactations	0	Kg	%RK	%Dev
Test Day Records	Milk	434	61%	
Daughters/Sons	Fat	35	85%	+0.18
Reliability	Protein	33	89%	+0.18

## LIFETIME PROFIT INDEX

Rel

GPA LPI	1638	75
PRODUCTION	745	
DURABILITY	906	
HEALTH & FERTILITY	-13	

## CONFORMATION

**GPA 12\* AUG**

Reliability: 74%

SCORECARD	Index	%RK	-15	-10	-5	0	5	10	15
Conformation	11	98%							
Mammary System	9	97%							
Feet & Legs	12	99%							
Dairy Strength	7	93%							
Rump	7	92%							

## DESCRIPTIVE

Udder Depth	4S	Deep							Shallow
Udder Texture	9	Fleshy							Soft
Median Suspensory	8	Weak							Strong
Fore Attachment	8	Weak							Strong
Front Teat Placement	3C	Wide							Close
Rear Attachment Height	6	Low							High
Rear Attachment Width	3	Narrow							Wide
Rear Teat Placement	3C	Wide							Close
Teat Length	1S	Short							Long
Foot Angle	4	Low							Steep
Heel Depth	4	Shallow							Deep
Bone Quality	7	Coarse							Flat
Rear Legs Side View	2S	Straight							Curved
Set of Rear Legs	10	Undesirable							Desirable
Rear Legs Rear View	9	Hocked-in							Straight
Stature	5	Short							Tall
Height at Front End	-2	Low							High
Chest Width	2	Narrow							Wide
Body Depth	1	Shallow							Deep
Angularity	8	Non-Angular							Angular
Loin Strength	2	Weak							Strong
Rump Angle	7L	High							Low
Pin Setting	5	Undesirable							Desirable
Pin Width	0	Narrow							Wide

## FUNCTIONAL

	Rating	Rel	Difference from Breed Average (SD)							Breed Avg.	
			-15	-10	-5	0	5	10	15		
Herd Life	106 GPA	72%								Long	100
Somatic Cell Score	2.87 GM	76%								Undesirable	3.00
Lactation Persistency	100 GPA	68%								Poor	100
Daughter Fertility	98 GPA	69%								Poor	100
Milking Speed	103 GPA	66%								Slow	100
Milking Temperament	98 GPA	65%								Nervous	100
Calving Ability	103 GPA	74%								Difficult	100
Daughter Calving Ability	102 GPA	67%								Difficult	100