

**HISTORY- BB83**

ESPH4503295594

DE000354049640

02/10/2010



**Mancombert o-man BOGART**

**HIMALAYA**

**(1) MB 86**

**Picston SHOTTLE**

**Henkeseen Heidi BLAISE**

**(2) EX 91**

**Fustead Emory BLITZ**

**Henkeseen Rud HEIDI**

**(3) EX 90**

Familia de vacas extraordinaria, plagada de vacas calificadas EX.

Altos indices genomicos de Grzg 134.

Varios hermanos testados en Europa.

De las familia de DUPLEX y SANCHEZ.

Contrato con Osnabruck, para macho reproductor

**4 MADRE**

**Henkeseen Holiday HILLARY**

**EX 94**

**Madre de DUPLEX**

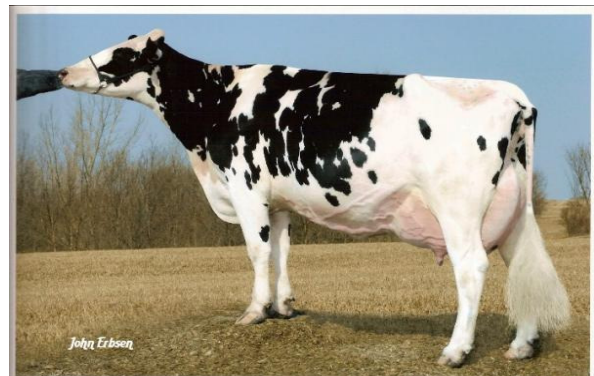
**5 MADRE**

**Henkeseen Mark MACI**

**EX 95**



**Himalaya**



**Henkessen Heidi BLAISE**

HISTORY HOESP004503295594 Birth date: 20100210 GFI: 7.3

Eurogenes, PO BOX 12, Fair Play MD 21733-0012

Trait	Genomic PTA	Official PA/PTA	Genomic REL %	Official REL %
<b>HEALTH</b>				
Net Merit(\$)	471	329	70	26
Daughter Pregnancy Rate (%)	0.2	0.4	62	16
Productive Life (months)	1.9	1.6	65	18
Somatic Cell Score	2.81	2.89	71	20
<b>YIELD</b>				
Milk	1132	746	76	43
Fat (lbs)	65	42	76	43
Fat (%)	0.09	0.06	76	
Pro (lbs)	35	27	76	43
Pro (%)	0.00	0.02	76	
<b>CALVING</b>				
Daughter Calving Ease	7	9	59	34
Daughter Stillbirth	5.9	7.4	51	30
<b>TYPE</b>				
Final Score (PTAT)	2.08	1.58	72	41
Stature	2.09	1.89		
Strength	2.03	1.83		
Body Depth	1.63	1.56		
Dairy Form	0.62	0.89		
Rump Angle	-0.17	0.11		
Thurl Width	1.29	1.35		
Rear Legs Side View	-0.66	-0.91		
Rear Legs Rear View	1.26	1.46		
Foot Angle	2.79	2.62		
Feet & Leg Score	2.01	1.68		
Fore Attachment	2.19	1.43		
Rear Udder Height	1.55	1.86		
Udder Cleft	-0.07	0.43		
Udder Depth	1.15	0.69	75	42
Front Teat Placement	0.88	0.52		
Rear Teat Placement	0.57	0.27		
Teat Length	-0.12	0.34		
Feet/Legs Composite	1.96	1.81	NA	NA
Udder Composite	1.18	1.21	NA	NA
TPI	1986	1820	NA	NA

Genomic PTA calculated using 50K test, September 2011



**HOLSTEIN ASSOCIATION USA, INC.**

1 Holstein Place, PO Box 808, Brattleboro, VT 05302-0808 [www.holsteinusa.com](http://www.holsteinusa.com) • 800.952.5200