

IESSI SHOTTLE REGALIZ

ESPH4503295113

ES040703393677

20/12/2010



Picston SHOTTLE

**Bos Laurier REGATA
MB 88**

Comestar LAURIER

**Bos Mandel RIGUEIRA
(2) EX 90**

Lutz- Meadow MANDEL

**Tidy- Brook B-Star SALLY
MB 88**

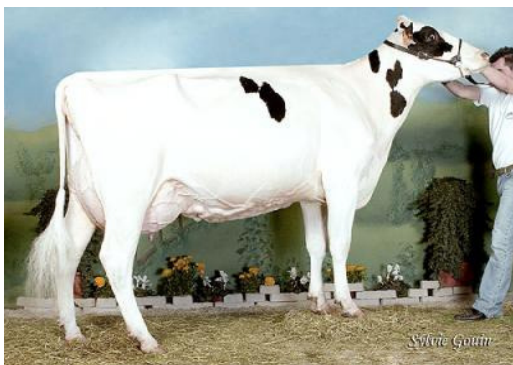
Nieta de BOS MANDEL RIGUEIRA, una de las mejores donantes del programa UTE BOS. Familia que destaca por su estructura y carácter lechero.

4 MADRE

**Tidy-Brook SALLY Ned Boy
mb 85**

Madre de Tidy- Brook Elton STEP

Abuela de ETAZON ADDISON



Bos Laurier REGATA



Bos Mandel RIGUEIRA



Genetic Evaluation Summary

HOESPF4503295113 IESSI SHOTTLE REGALIZ **%INB** **%R**
 Born 20-DEC-10 ET 5.08% 13%

Sire: HOGBRM598172	PICSTON SHOTTLE-ET	23-JUL-99	6.36%	15%
Dam: HOESPF1501989032	BOS LAURIER REGATA	29-NOV-01	4.95%	11%
MGS: HOCANM6334336	COMESTAR LAURIER	02-APR-95	1.18%	11%

PRODUCTION	GPA 11*AUG			LIFETIME PROFIT INDEX		Rel	
Lactations	0	Kg	%RK	%Dev	GPA LPI	1104	68
Test Day Records	Milk	1039	86%		PRODUCTION	539	
Daughters/Sons	Fat	27	76%	-0.11	DURABILITY	515	
Reliability	70% Protein	29	85%	-0.05	HEALTH & FERTILITY	50	

CONFORMATION **GPA 11*AUG** Reliability: 67%

SCORECARD	Index	%RK	-15	-10	-5	0	5	10	15
Conformation	8	90%				█	█		
Mammary System	9	96%				█	█		
Feet & Legs	2	44%				█	█		
Dairy Strength	5	77%				█	█		
Rump	8	95%				█	█		

DESCRIPTIVE

Udder Depth	4S	Deep				█	█			Shallow
Udder Texture	4	Fleshy				█	█			Soft
Median Suspensory	7	Weak				█	█			Strong
Fore Attachment	5	Weak				█	█			Strong
Front Teat Placement	8C	Wide				█	█			Close
Rear Attachment Height	4	Low				█	█			High
Rear Attachment Width	2	Narrow				█	█			Wide
Rear Teat Placement	3C	Wide				█	█			Close
Teat Length	1S	Short				█	█			Long
Foot Angle	5	Low				█	█			Steep
Heel Depth	10	Shallow				█	█			Deep
Bone Quality	1	Coarse				█	█			Flat
Rear Legs Side View	2C	Straight				█	█			Curved
Set of Rear Legs	1	Undesirable				█	█			Desirable
Rear Legs Rear View	-2	Hocked-in				█	█			Straight
Stature	4	Short				█	█			Tall
Height at Front End	4	Low				█	█			High
Chest Width	3	Narrow				█	█			Wide
Body Depth	1	Shallow				█	█			Deep
Angularity	4	Non-Angular				█	█			Angular
Loin Strength	4	Weak				█	█			Strong
Rump Angle	1H	High				█	█			Low
Pin Setting	5	Undesirable				█	█			Desirable
Pin Width	4	Narrow				█	█			Wide

FUNCTIONAL	Rating	Rel	Difference from Breed Average (SD)	Breed Avg.
Herd Life	102GPA	65%	Short	100
Somatic Cell Score	2.84GPA	69%	Undesirable	3.00
Lactation Persistency	103GPA	61%	Poor	100
Daughter Fertility	100GPA	61%	Poor	100
Milking Speed	101GPA	59%	Slow	100
Milking Temperament	108GPA	58%	Nervous	100
Calving Ability	92GPA	68%	Difficult	100
Daughter Calving Ability	96GPA	59%	Difficult	100