

COLMENAR FEVER TRUNA

ESPH4503507598

ES090703304033

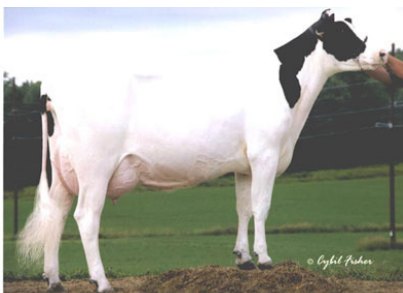
30/07/2011

**Crackholm FEVER****Bos Bolton TRUDY
MB 85****Sandy- Valley BOLTON****sandy- Valley Gar TRUFFLE
EX 90****Wellcome GARTER****Ricecrest Terry TORY
(2) EX 92**

De la familia de TORY TERRY
Hermana materna de Manager TAPY y Goldwyn TANGIA
Altas producciones con indices excelentes.
Su hermana completa BOS BOLTON TRUDY tiene un GLPI para leche de + 2277
Su madre GAR TRUFFLE, actualmente tiene un glpi de +2365 Kg de leche.

GTPI	LBS
GRASA	76
PROTEINA	30
LECHE	1367

MORFOLOGIA	
TIPO	2,13
UBRES	1,31
PATAS	2,12

4 MADRE**Ricecrest Luke LISA
EX 92****5 MADRE****Ricecrest Southwind AMY
BB 84****6 MADRE****Ricecrest Ned Boy NOREEN
EX 91****7 MADRE****Ricecrest Jemini JAYANNA
MB 87****8 MADRE****Ricecrest Elevation ELLA
MB 86****9 MADRE****Terracelane Ideal STAR
MB 88****Sandy-Valley Gar TRUFFLE****Ricecrest Terry TORY**

COLMENAR FEVER TRUNA ET

ESP004503507598 07/30/2011 FEMALE

Eurogenes, PO BOX 12, Fair Play MD 21733-0012

Haplotypes (C=Carrier, T=Tested-free): HH1T HH2T HH3T

GFI: 7.1

HEALTH TRAITS				
	Genomic PTA	Aug 2012 PTA	Genomic REL %	Aug 2012 REL %
Net Merit(\$)	615	306	70	30
Daughter Pregnancy Rate (%)	-0.3	-0.8	65	28
Productive Life (months)	4.7	1.9	67	28
Somatic Cell Score	2.66	2.95	70	32
YIELD TRAITS				
	Genomic PTA	Aug 2012 PTA	Genomic REL %	Aug 2012 REL %
Milk	1367	916		34
Fat (lbs)	76	45	76	34
Fat (%)	0.10			
Pro (lbs)	30	25	76	34
Pro (%)	-0.04			
CALVING TRAITS				
	Genomic PTA	Aug 2012 PTA	Genomic REL %	Aug 2012 REL %
Daughter Calving Ease	6	8	54	32
Daughter Stillbirth	6.5	7.1	50	30
TYPE TRAITS				
	Genomic PTA	Aug 2012 PTA	Genomic REL %	Aug 2012 REL %
Final Score (PTAT)	2.13	2.11	75	33
Feet/Legs Composite	1.31	1.49	NA	NA
Udder Composite	2.12	1.61	NA	NA
Stature	1.84			
Strength	0.03			
Body Depth	0.50			
Dairy Form	1.52			
Rump Angle	1.72			
Thurl Width	0.22			
Rear Legs Side View	-0.22			
Rear Legs Rear View	1.28			
Foot Angle	1.02			
Feet & Leg Score	1.63			
Fore Attachment	2.86			
Rear Udder Height	2.36			
Udder Cleft	2.17			
Udder Depth	1.74		77	
Front Teat Placement	1.47			
Rear Teat Placement	1.41			
Teat Length	0.15			
Total Performance Index (TPI)	2106	1813	NA	NA

Genomic PTA calculated using 50K test, Dec 2012

Haplotypes impacting fertility are reported for 6K, 9K, 50K, and HD reports.

For more on interpreting this report, visit www.holsteinusa.com

HOLSTEIN ASSOCIATION USA, INC.

1 Holstein Place, PO Box 808, Brattleboro, VT 05302-0808 www.holsteinusa.com • 800.952.5200