

HNOS MIGUEL WINDBROOK TURRA

ESPH4503508935

ES080703425878

05/11/2011

**Gillette WINDBROOK**

Bos Bolton TRUDY
MB 85

Sandy- Valley BOLTON

sandy- Valley Gar TRUFFLE
EX 90

Wellcome GARTER

Ricecrest Terry TORY
(2) EX 92

De la familia de TORY TERRY
 Hermana materna de Manager TAPY y Goldwyn TANGIA
 Altas producciones con indices excelentes.
 Su hermana completa BOS BOLTON TRUDY tiene un GLPI para leche de + 2277
 Su madre GAR TRUFFLE, actualmente tiene un glpi de +2365 Kg de leche.

GTPI	LBS
GRASA	35
PROTEINA	39
LECHE	1522

MORFOLOGIA	
TIPO	1,95
UBRES	1,53
PATAS	1,99

4 MADRE

Ricecrest Luke LISA
EX 92

5 MADRE

Ricecrest Southwind AMY
BB 84

6 MADRE

Ricecrest Ned Boy NOREEN
EX 91

7 MADRE

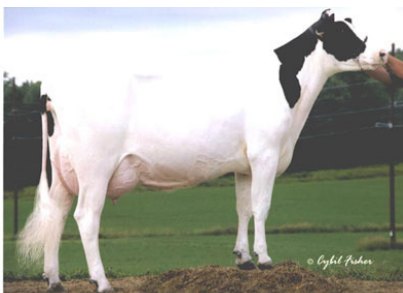
Ricecrest Jemini JAYANNA
MB 87

8 MADRE

Ricecrest Elevation ELLA
MB 86

9 MADRE

Terracelane Ideal STAR
MB 88



Sandy-Valley Gar TRUFFLE



Ricecrest Terry TORY

HNOS MIGUEL WINDBROOK TURRA ET ESP004503508935 05/11/2011 FEMALE
 Eurogenes, PO BOX 12, Fair Play MD 21733-0012

Haplotypes (C=Carrier, T=Tested-free): HH1T HH2T HH3T

GFI: 6.7

HEALTH TRAITS				
	Genomic PTA	Aug 2012 PTA	Genomic REL %	Aug 2012 REL %
Net Merit(\$)	232	263	70	30
Daughter Pregnancy Rate (%)	-1.8	-1.8	65	28
Productive Life (months)	0.6	0.5	66	28
Somatic Cell Score	3.07	3.06	70	31
YIELD TRAITS				
	Genomic PTA	Aug 2012 PTA	Genomic REL %	Aug 2012 REL %
Milk	1522	1128		34
Fat (lbs)	35	48	76	34
Fat (%)	-0.07			
Pro (lbs)	39	35	76	34
Pro (%)	-0.02			
CALVING TRAITS				
	Genomic PTA	Aug 2012 PTA	Genomic REL %	Aug 2012 REL %
Daughter Calving Ease	9	9	53	32
Daughter Stillbirth	8.3	7.5	50	31
TYPE TRAITS				
	Genomic PTA	Aug 2012 PTA	Genomic REL %	Aug 2012 REL %
Final Score (PTAT)	1.95	2.33	75	33
Feet/Legs Composite	1.99	2.19	NA	NA
Udder Composite	1.53	1.83	NA	NA
Stature	0.90			
Strength	0.32			
Body Depth	0.99			
Dairy Form	2.42			
Rump Angle	0.29			
Thurl Width	1.37			
Rear Legs Side View	-1.32			
Rear Legs Rear View	1.61			
Foot Angle	1.61			
Feet & Leg Score	2.41			
Fore Attachment	1.47			
Rear Udder Height	3.55			
Udder Cleft	1.72			
Udder Depth	0.09		77	
Front Teat Placement	-0.18			
Rear Teat Placement	0.61			
Teat Length	-0.10			
Total Performance Index (TPI)	1753	1811	NA	NA

Genomic PTA calculated using 50K test, Dec 2012

Haplotypes impacting fertility are reported for 6K, 9K, 50K, and HD reports.

For more on interpreting this report, visit www.holsteinusa.com



HOLSTEIN ASSOCIATION USA, INC.

1 Holstein Place, PO Box 808, Brattleboro, VT 05302-0808 www.holsteinusa.com • 800.952.5200