

AGROP. SANCHEZ BOLTON REGATZA

ESPH4503509400

ES030703315158

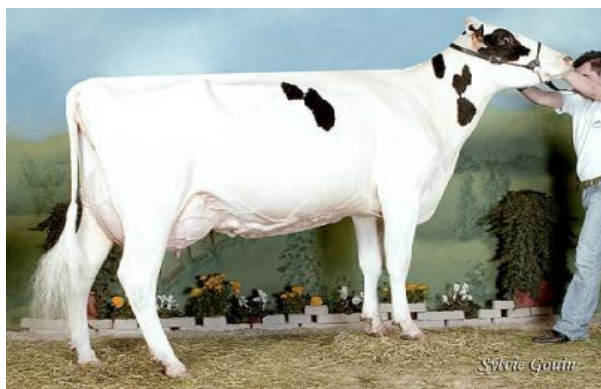
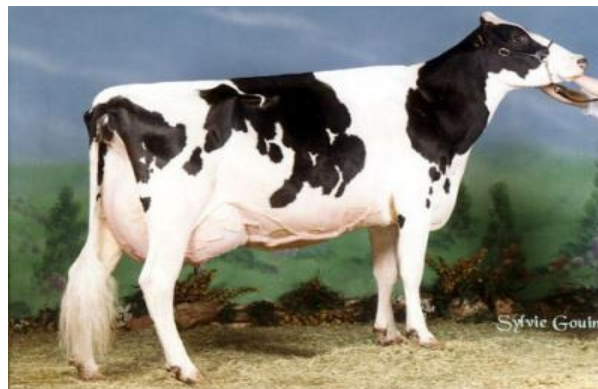
17/11/2011

**Sandy- Valley BOLTON****Bos Laurier REGATA
MB 88****Comestar LAURIER****Bos Mandel RIGUEIRA
(2) EX 90****Lutz- Meadow MANDEL****Tidy- Brook B-Star SALLY
MB 88**

Nieta de BOS MANDEL RIGUEIRA, una de las mejores donantes del programa UTE BOS. Familia que destaca por su estructura y carácter lechero.

GTPÍ	LBS
GRASA	26
PROTEINA	16
LECHE	314

MORFOLOGIA	
TIPO	2,25
UBRES	2,26
PATAS	1,19

4 MADRE**Tidy-Brook SALLY Ned Boy
mb 85****Madre de Tidy- Brook Elton STEP****Abuela de ETAZON ADDISON****Bos Laurier Regata****Bos Mandel Rigueira**

AGROP SANCHEEZ BOLTON REGATZA ESP004503509400 11/17/2011 FEMALE
 Eurogenes, PO BOX 12, Fair Play MD 21733-0012

Haplotypes (C=Carrier, T=Tested-free): HH1C HH2T HH3T

GFI: 6.2

HEALTH TRAITS				
	Genomic PTA	Aug 2012 PTA	Genomic REL %	Aug 2012 REL %
Net Merit(\$)	-6	133	71	35
Daughter Pregnancy Rate (%)	-2.3	-1.7	66	33
Productive Life (months)	-1.4	0.8	68	33
Somatic Cell Score	3.06	2.93	70	34
YIELD TRAITS				
	Genomic PTA	Aug 2012 PTA	Genomic REL %	Aug 2012 REL %
Milk	314	807		44
Fat (lbs)	26	16	77	44
Fat (%)	0.06	-0.06		
Pro (lbs)	16	25	77	44
Pro (%)	0.02	0.00		
CALVING TRAITS				
	Genomic PTA	Aug 2012 PTA	Genomic REL %	Aug 2012 REL %
Daughter Calving Ease	11	11	54	37
Daughter Stillbirth	10.5	10.2	51	36
TYPE TRAITS				
	Genomic PTA	Aug 2012 PTA	Genomic REL %	Aug 2012 REL %
Final Score (PTAT)	2.25	1.53	75	42
Feet/Legs Composite	1.19	1.09	NA	NA
Udder Composite	2.26	1.57	NA	NA
Stature	2.47	0.95		
Strength	1.21	-0.30		
Body Depth	1.84	0.23		
Dairy Form	2.15	1.62		
Rump Angle	0.58	0.15		
Thurl Width	1.20	0.21		
Rear Legs Side View	0.70	0.76		
Rear Legs Rear View	0.98	1.01		
Foot Angle	1.54	1.34		
Feet & Leg Score	1.38	1.28		
Fore Attachment	3.17	2.07		
Rear Udder Height	2.07	2.19		
Udder Cleft	1.41	0.89		
Udder Depth	2.45	1.38	76	
Front Teat Placement	1.74	1.25		
Rear Teat Placement	1.40	0.96		
Teat Length	-0.06	0.00		
Total Performance Index (TPI)	1546	1594	NA	NA

Genomic PTA calculated using 50K test, Dec 2012

Haplotypes impacting fertility are reported for 6K, 9K, 50K, and HD reports.

For more on interpreting this report, visit www.holsteinusa.com



HOLSTEIN ASSOCIATION USA, INC.

1 Holstein Place, PO Box 808, Brattleboro, VT 05302-0808 www.holsteinusa.com • 800.952.5200