

JERONIMOS GOLDWYN CINDERELLA

ESPH4503510033

ES050703427188

24/01/2012

**Braedale GOLDWYN****Giessen CINDERELLA 15****EX 90****Picston SHOTTLE****Durham CINDERELLA****MN 89****Regancrest DURHAM****Wilcoxview CINDERELLA****EX 91**

Descendiente de Queen of the Breed.

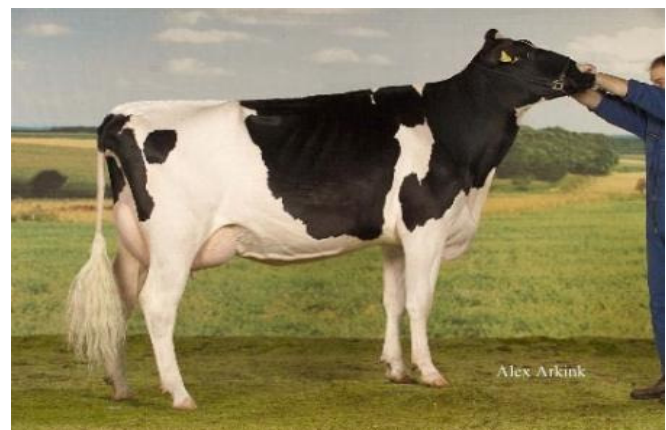
CITATION ROXY.

Una de las familias más famosas del momento.

Todo en un mismo paquete, grandísima familia de vacas, excelente morfología, alto índices genómicos y atractivo pedigree.

Hermanas de CINDERELLA 22 Y CINDERELLA 20

MORFOLOGIA	
TIPO	2,92
UBRES	2,76
PATAS	1,86

4 MADRE**Scientific CINDERELLA****MB 88****5 MADRE****C Hanoverhill TONY RAE****EX 96****6 MADRE****C Hanoverhill TT ROXETTE****EX 94****7 MADRE****Mir r Mor ROXETTE****EX 90****8 MADRE****C Glenridge Citation ROXY****EX 97****La Reina de la Raza****Giessen CINDERELLA 15****Durham CINDERELLA**

JERONIMOS GOLDWYN CINDERELLA ESP004503510033 01/24/2012 FEMALE

Eurogenes, PO BOX 12, Fair Play MD 21733-0012

Haplotypes (C=Carrier, T=Tested-free): HH1T HH2T HH3T

GFI: 7.2

HEALTH TRAITS				
	Genomic PTA	Aug 2012 PTA	Genomic REL %	Aug 2012 REL %
Net Merit(\$)	348	280	71	35
Daughter Pregnancy Rate (%)	0.2	0.2	66	33
Productive Life (months)	2.1	2.4	67	33
Somatic Cell Score	2.62	2.61	70	33
YIELD TRAITS				
	Genomic PTA	Aug 2012 PTA	Genomic REL %	Aug 2012 REL %
Milk	167	-76		45
Fat (lbs)	18	4	77	45
Fat (%)	0.05	0.03		
Pro (lbs)	16	6	77	45
Pro (%)	0.04	0.03		
CALVING TRAITS				
	Genomic PTA	Aug 2012 PTA	Genomic REL %	Aug 2012 REL %
Daughter Calving Ease	5	7	54	39
Daughter Stillbirth	4.3	6.0	51	38
TYPE TRAITS				
	Genomic PTA	Aug 2012 PTA	Genomic REL %	Aug 2012 REL %
Final Score (PTAT)	2.92	2.93	76	44
Feet/Legs Composite	1.86	1.95	NA	NA
Udder Composite	2.76	3.02	NA	NA
Stature	2.89	2.83		
Strength	0.66	1.07		
Body Depth	1.47	1.45		
Dairy Form	3.14	2.16		
Rump Angle	0.00	-0.09		
Thurl Width	1.15	1.65		
Rear Legs Side View	1.06	0.75		
Rear Legs Rear View	1.63	1.84		
Foot Angle	1.63	1.92		
Feet & Leg Score	2.49	2.41		
Fore Attachment	2.81	3.53		
Rear Udder Height	3.51	3.80		
Udder Cleft	2.34	2.23		
Udder Depth	2.36	2.96	77	
Front Teat Placement	1.15	1.00		
Rear Teat Placement	1.18	0.95		
Teat Length	-0.45	-0.05		
Total Performance Index (TPI)	1938	1857	NA	NA

Genomic PTA calculated using 50K test, Dec 2012

Haplotypes impacting fertility are reported for 6K, 9K, 50K, and HD reports.

For more on interpreting this report, visit www.holsteinusa.com



HOLSTEIN ASSOCIATION USA, INC.

1 Holstein Place, PO Box 808, Brattleboro, VT 05302-0808 www.holsteinusa.com • 800.952.5200